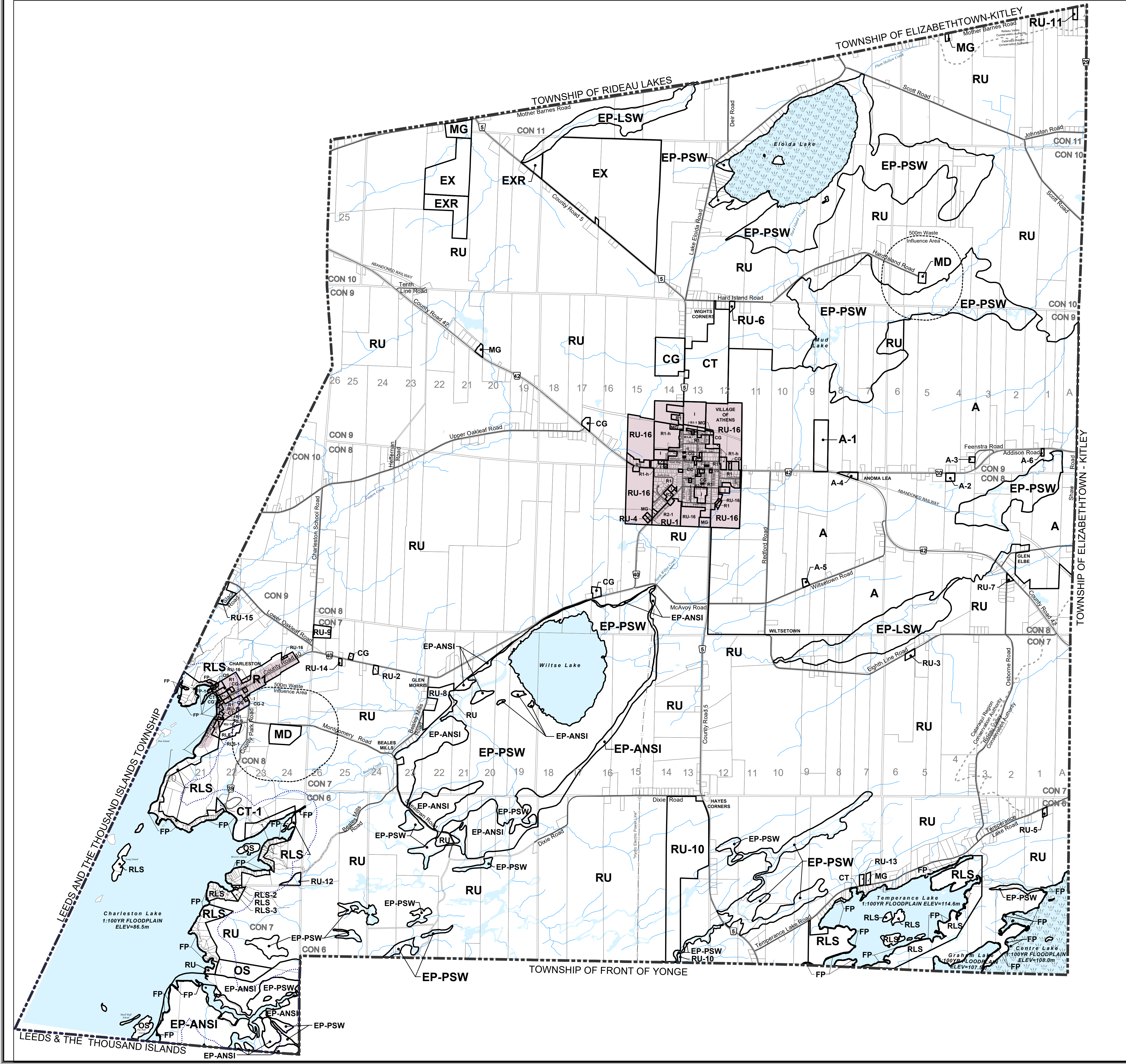




# ZONING BY-LAW No. 2013-10 SCHEDULE A



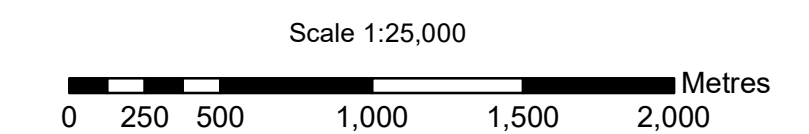
## ZONES

<b>R1</b> RESIDENTIAL FIRST DENSITY	<b>I</b> INSTITUTIONAL
<b>R2</b> RESIDENTIAL SECOND DENSITY	<b>OS</b> OPEN SPACE
<b>RLS</b> RESIDENTIAL LIMITED SERVICES	<b>RU</b> RURAL
<b>RMH</b> MOBILE HOME PARK RESIDENTIAL	<b>A</b> AGRICULTURE
<b>CC</b> CORE COMMERCIAL	<b>EP-PSW</b> ENVIRONMENTAL PROTECTION - PSW
<b>CG</b> GENERAL COMMERCIAL	<b>EP-ANSI</b> ENVIRONMENTAL PROTECTION - ANSI
<b>CL</b> LOCAL COMMERCIAL	<b>EP-LSW</b> ENVIRONMENTAL PROTECTION - LSW
<b>CT</b> TOURIST COMMERCIAL	<b>FP</b> FLOOD PLAIN
<b>MG</b> GENERAL INDUSTRIAL	<b>EX</b> MINERAL AGGREGATE EXTRACTION
<b>MS</b> SALVAGE YARD INDUSTRIAL	<b>EXR</b> MINERAL AGGREGATE RESERVE
<b>MD</b> DISPOSAL INDUSTRIAL	
SETTLEMENT AREA DESIGNATION FROM OFFICIAL PLAN	
NATURAL HERITAGE A DESIGNATION FROM OFFICIAL PLAN	
CHARLESTON LAKE 300m LAKE CAPACITY POLICY FROM OFFICIAL PLAN	

NOTE:  
ALL ISLANDS ZONED RLS  
UNLESS OTHERWISE INDICATED

## ROADS

- County Road
- Township Road
- Private Road



ISSUE DATE: JUNE, 2024



Engineers, Planners & Landscape Architects  
Suite 205, 245 McEwen Crescent Drive  
Ottawa, Ontario, Canada  
K2M 1P5  
Telephone: (613) 254-8843  
Facsimile: (613) 254-8867  
www.novatech-inc.com

THIS PLAN IS BASED UPON INFORMATION OBTAINED JULY, 2007 FROM THE UNITED COUNTIES OF LEEDS AND GRENVILLE.  
JOB# 123160